

Harry Park Primary School
Primary 3 Science
Weighted Assessment 1 2021

Name: _____ () Class: 3 _____ Marks: _____ / 15

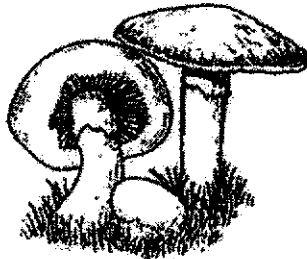
Short Answer Questions (15 marks)

Duration: 30 minutes

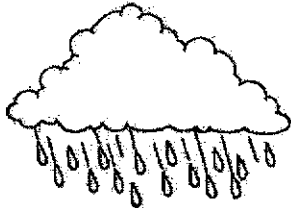
Read and answer questions 1 to 7 carefully.

1. Draw lines to match all the things to the correct groups.

[2]



●



●

●

Living thing



●

●

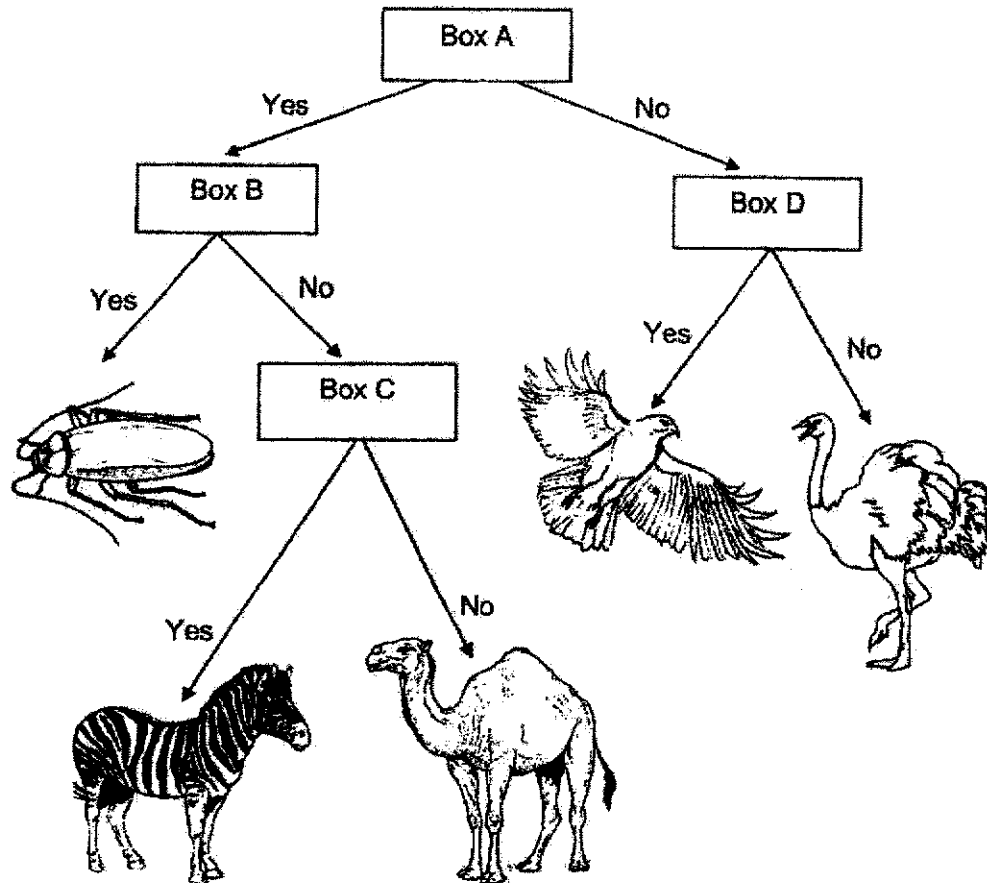
Non - living thing



●

2. Mina and Zoe grouped some animals using the chart shown below.

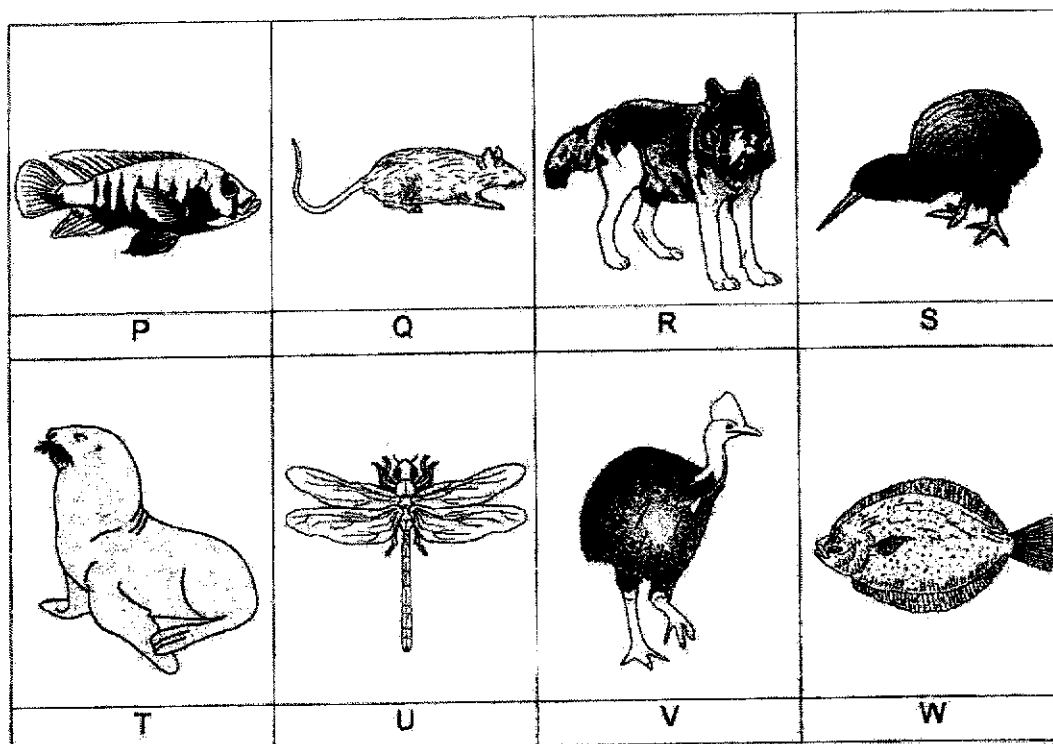
[2]



In the chart above, each box, A, B, C and D, represents a question.
Complete the table below with the correct letters, A, B, C or D.

Question		The question goes into box
(i)	Does the animal fly?	
(ii)	Does the animal have feelers?	
(iii)	Does the animal have more than 2 legs?	
(iv)	Does the animal have stripes on its body?	

3. The pictures show some animals.



- (a) From the pictures above, which **three** animals belong to the same animal group? [1]

Write the correct **letters** in the boxes below.

- (b) From the pictures given, which are the animals that have fins? [1]
Write the correct letters in the space given below.

4. Observe the different parts of plant F shown below.



Plant F

The diagram below shows plant G.

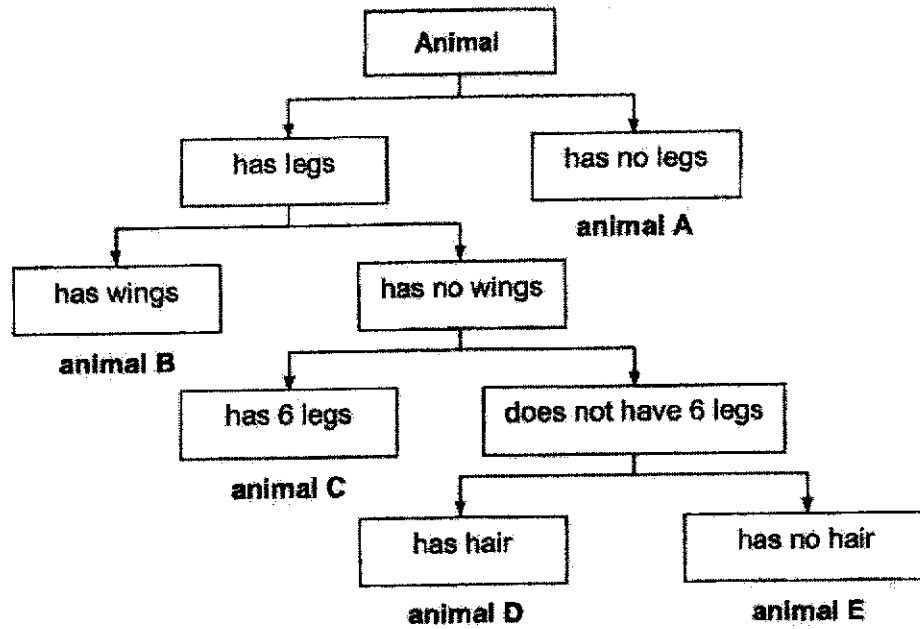
In plant G shown below, circle the parts that cannot be seen in plant F.

[2]



Plant G

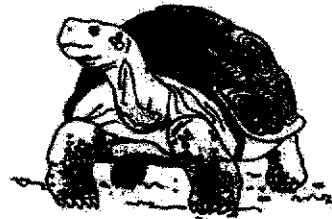
5. The diagram shows how some animals are grouped.

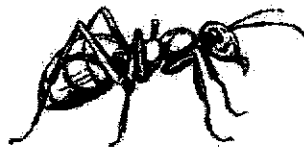


Study the pictures of the animals shown below. Based on the information given above, write the correct letter (A, B, C, D or E) in the boxes given.

[3]







6. Study the pictures shown below carefully. For each picture, write the correct [2] characteristic of the living thing in the spaces provided.

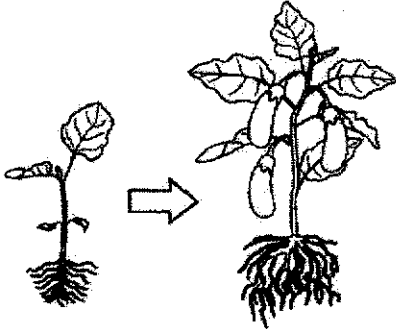
PictureCharacteristic of Living Things

(a)



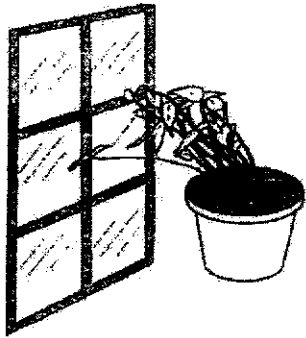
Living things _____

(b)



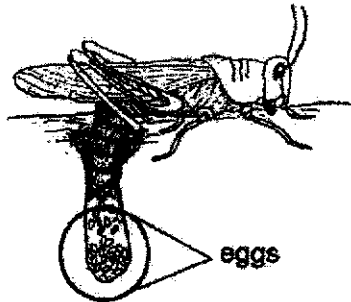
Living things _____

(c)



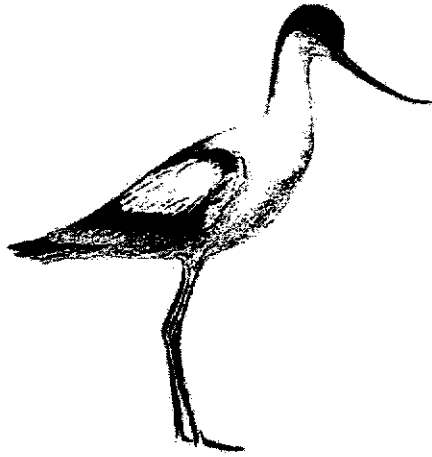
Living things _____

(d)

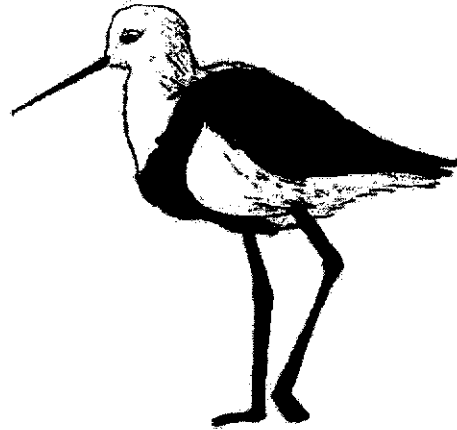


Living things _____

7. The diagrams show animals X and Y. Observe the different parts of animals X and Y carefully.



Animal X



Animal Y

Based on the diagrams given, tick (✓) the correct observations of animals X and Y. [2]

(a) Animal X has a curved beak.

☐

(b) Animal Y has a straight beak.

☐

(c) Animal Y has a black and white head.

☐

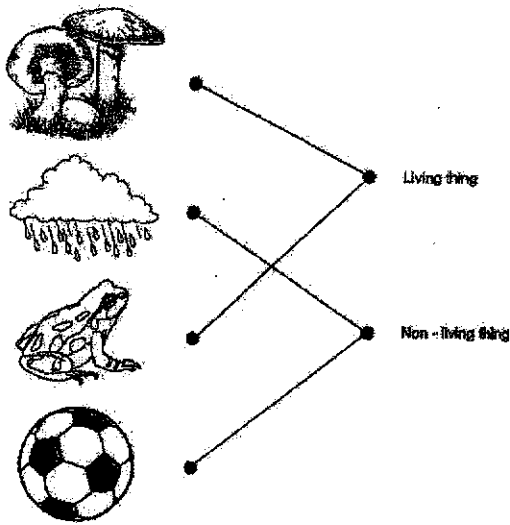
(d) Both animals have feathers as outer covering.

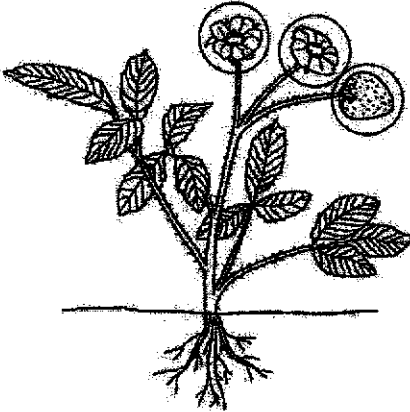



☐

End of Weighted Assessment 1

SCHOOL : HENRY PARK PRIMARY SCHOOL
LEVEL : PRIMARY 3
SUBJECT : SCIENCE
TERM : WEIGHTED ASSESSMENT 1

Weighted Assessment 1

Q1	
Q2	a) D b) B c) A d) C
Q3	a) Q, R, T b) P, W

Q4	 <p data-bbox="643 674 719 701">Plant G</p>
Q5	 <p data-bbox="518 922 593 974">D</p>  <p data-bbox="901 922 976 974">E</p>  <p data-bbox="710 1124 785 1176">C</p>
Q6	<p data-bbox="406 1198 1050 1339"> a) Living things need food to survive. b) Living things grow. c) Living things respond to changes to around them. d) Living things reproduce </p>
Q7	<p data-bbox="406 1344 673 1377">a) Tick (a),(b) and (d)</p>